

Energieeffizienzklasse "E"

LED Chip: LDS-15C21B



RoHS

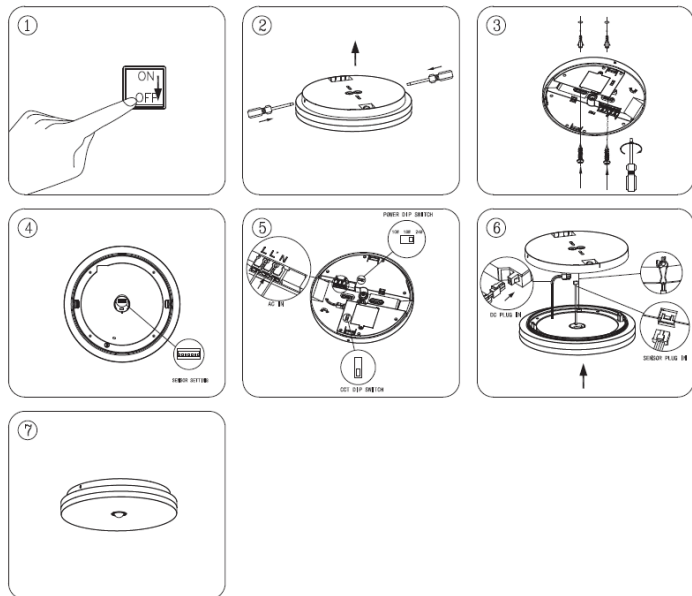


IP54

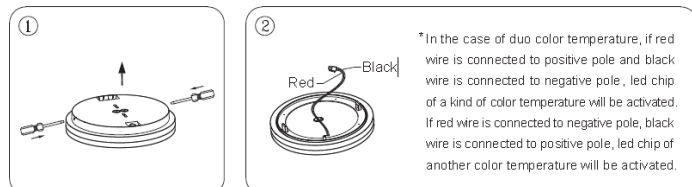


Leuchte	Spannung	Stromstärke	PF	Leistung	Lumen	Ø (mm)	H (mm)	ta (°C)
Slice Circle PR 10W / 18W / 24W	220V - 240V	0.05A / 0.085A / 0.11A	0.85 / 0.9 / 0.95	10W / 18W / 24W	1100lm / 2100lm / 2600lm	270	57	40
Geeignete Version: Mit oder ohne Farbtemperatur wählbare Funktion. Farbtemperatur: Warmweiß (2700K-3200K), Neutralweiß (3800K-4200K), Kaltweiß (5000K-6600K)								

Installation Anleitung



Anleitung zur Demontage



Befolgen Sie stets diese Anleitung, um eine korrekte und sichere Installation der Leuchte zu gewährleisten.

Bewahren Sie diese Anleitung auf.

Schalten Sie vor Beginn der Installation immer den Strom ab.

Wenden Sie sich im Zweifelsfall an einen qualifizierten Elektriker. Stellen Sie sicher, dass Sie die Leuchte gemäß den Vorschriften installieren.

HINWEIS: Die Leuchten sind nicht identisch untereinander.

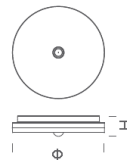
Leuchten können zwischen demselben Modell mit unterschiedlicher Funktionen, zu Fehlfunktionen oder unsachgemäßem Betrieb der Leuchten führen.

Bitte beachten Sie die Farbkennzeichnung

(z.B. rotes Etikett passt zu rotem Etikett).

DER HERSTELLER ÜBERNIMMT KEINE RISIKEN UND VERANTWORTUNG, DIE SICH AUS EINEM NICHT NORMGERECHTEN BETRIEB ERGEBEN.

Correct Disposal of this product	
	This marking indicates that this product should not be disposed with other household wastes throughout the EU. To prevent possible harm to the environment or human health from uncontrolled waste disposal, recycle it responsibly to promote the sustainable reuse of material resources. To return your used device, please use the return and collection systems or contact the retailer where the product was purchased. They can take this product for environmental safe recycling.



Classe di efficienza energetica "E"

Chip LED: LDS-15C21B



RoHS

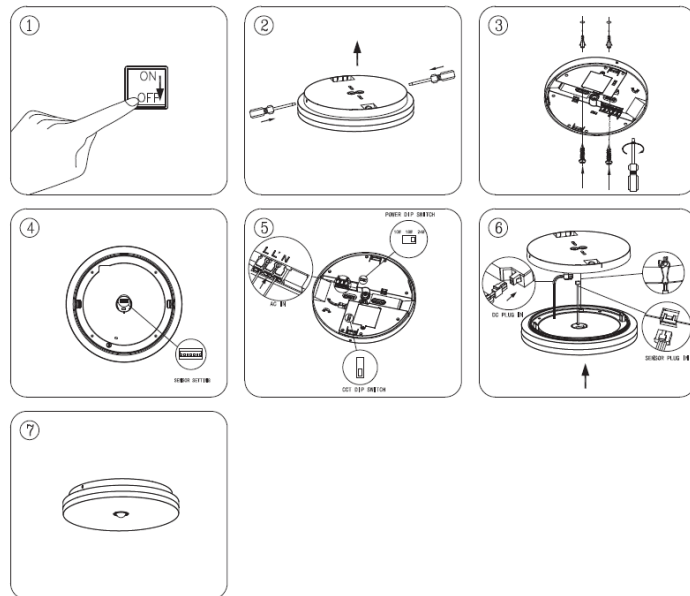


IP54

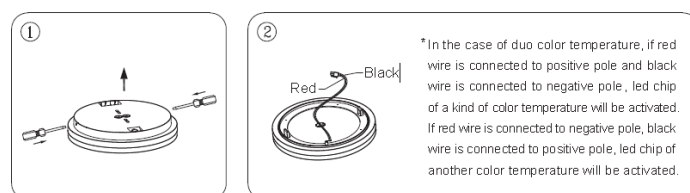


modello	voltage	intensità della corrente	PF	Potenza	Lumen	Ø (mm)	H (mm)	ta (°C)
Slice Circle PR 10W / 18W / 24W	220V - 240V	0.05A / 0.085A / 0.11A	0.85 / 0.9 / 0.95	10W / 18W / 24W	1100lm / 2100lm / 2600lm	270	57	40
Versione adatta: Con o senza funzione di selezione della temperatura di colore. Temperatura colore: Bianco caldo (2700K-3200K), bianco neutro (3800K-4200K), bianco freddo (5000K-6600K).								

Guida d'installazione



Istruzioni per lo smontaggio



Seguite sempre queste istruzioni per garantire un'installazione e un funzionamento corretto e sicuro della Lampada.

Conservare l'istruzione per riferimenti futuri.

Staccate sempre l'corrente prima di iniziare l'installazione.

In caso di dubbio, consultate un elettricista qualificato.

Installate la Lampada nel rispetto delle norme vigenti.

NOTA: Le Lampade degli apparecchi non sono identici tra i stessi modelli o tra gli stessi modelli con funzioni diverse.

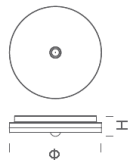
modelli o tra lo stesso modello con funzioni diverse. L'uso promiscuo può

L'uso misto può causare il malfunzionamento degli apparecchi o il loro funzionamento improprio. Si prega di seguire

l'etichetta del colore per l'installazione (**ad esempio, l'etichetta rossa corrisponde all'etichetta rossa**).

IL PRODUTTORE NON SI ASSUME ALCUN RISCHIO E RESPONSABILITÀ DERIVANTI DA UN FUNZIONAMENTO NON STANDARD.

Correct Disposal of this product	
	This marking indicates that this product should not be disposed with other household wastes throughout the EU. To prevent possible harm to the environment or human health from uncontrolled waste disposal, recycle it responsibly to promote the sustainable reuse of material resources. To return your used device, please use the return and collection systems or contact the retailer where the product was purchased. They can take this product for environmental safe recycling.



Classe d'efficacité énergétique "E"

Puce LED : LDS-15C21B



RoHS



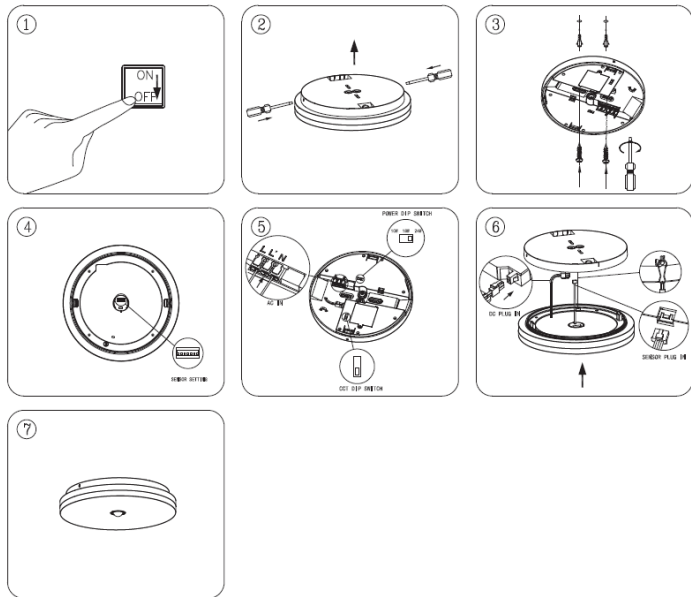
IP54



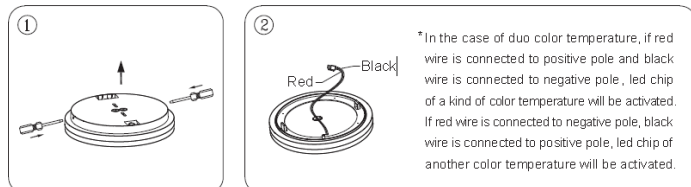
Model	Voltage	Intensity of current	PF	Power	Lumen	Ø (mm)	H (mm)	ta (°C)
Slice Circle PR 10W / 18W / 24W	220V - 240V	0.05A / 0.085A / 0.11A	0.85 / 0.9 / 0.95	10W / 18W / 24W	1100lm / 2100lm / 2600lm	270	57	40

Version adaptée : Avec ou sans fonction de sélection de la température de couleur.
Température de couleur : Blanc chaud (2700K-3200K), blanc neutre (3800K-4200K), blanc froid (6000K-6600K).

Guide d'installation



Instructions de démontage



Suivez toujours cette instruction pour garantir une installation et un fonctionnement corrects et sûrs du luminaire.

l'installation et le fonctionnement du luminaire en toute sécurité et conservez-les pour toute référence ultérieure.

Toujours isoler le courant avant de commencer l'installation.

En cas de doute, consultez un électricien qualifié. Assurez-vous que vous installez toujours

le luminaire conformément aux réglementations en vigueur.

REMARQUE : les lampes des luminaires ne sont pas identiques d'un modèle à l'autre ou d'un modèle à l'autre.

modèles ou entre un même modèle avec une fonction différente. Une utilisation mixte

entraînera un dysfonctionnement des luminaires ou un mauvais fonctionnement. Veuillez suivre

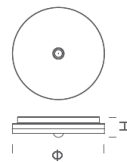
l'étiquette de couleur pour l'installation (**par exemple, l'étiquette rouge correspond à l'étiquette rouge**).

LE FABRICANT N'ASSUME PAS LES RISQUES ET LES RESPONSABILITÉS DÉCOULANT D'UN FONCTIONNEMENT NON STANDARD.

Correct Disposal of this product



This marking indicates that this product should not be disposed with other household wastes throughout the EU. To prevent possible harm to the environment or human health from uncontrolled waste disposal, recycle it responsibly to promote the sustainable reuse of material resources. To return your used device, please use the return and collection systems or contact the retailer where the product was purchased. They can take this product for environmental safe recycling.



Energy efficiency class «E»

Light Model: LDS-15C21B



RoHS



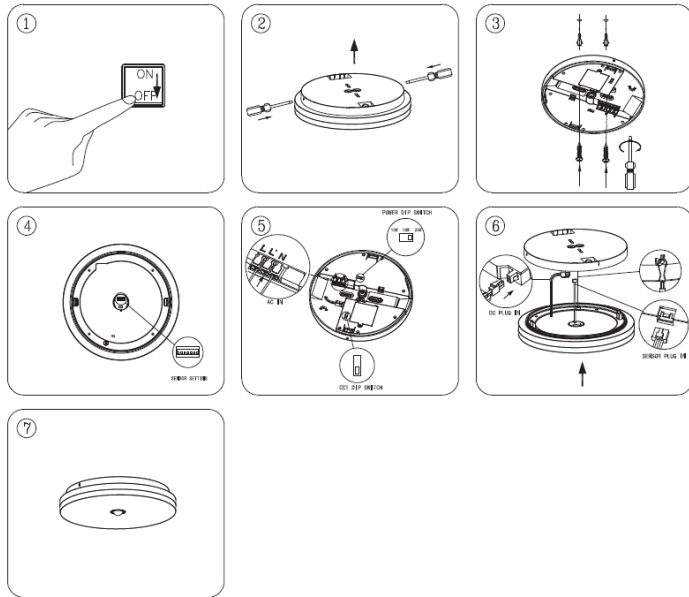
IP54



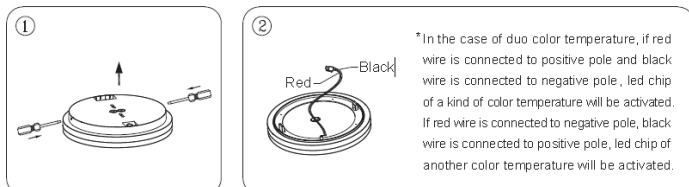
Model	Voltage	Current	PF	Wattage	Luminous Flux	Ø (mm)	H (mm)	ta (°C)
Slice Circle PR 10W / 18W / 24W	220V - 240V	0.05A / 0.085A / 0.11A	0.85 / 0.9 / 0.95	10W / 18W / 24W	1100lm / 2100lm / 2600lm	270	57	40

Suitable Version: With or Without Color Temperature Selectable Function
Color Temperature: Warm White (2700K-3200K), Neutral White (3800K-4200K), Cool White (6000K-6600K)

Installation instruction



Light source disassembly instruction



Always follow this instruction to ensure correct and safe installation and functioning of the luminaire and keep it for future reference.

Always isolate the power before commencing installation.

If in doubt, consult a qualified electrician. Ensure that you always install the luminaire to the relevant regulations.

NOTE: The illuminators of luminaires are non-identical between different models or between same model with different function. Mixed use will lead malfunction of the luminaires or working improperly. Please follow the color label to install if has (**e.g red label matches red label**).

MANUFACTURER DOES NOT TAKE ANY RISKS AND RESPONSIBILITIES ARISING FROM NON-STANDARD OPERATION.

Correct Disposal of this product



This marking indicates that this product should not be disposed with other household wastes throughout the EU. To prevent possible harm to the environment or human health from uncontrolled waste disposal, recycle it responsibly to promote the sustainable reuse of material resources. To return your used device, please use the return and collection systems or contact the retailer where the product was purchased. They can take this product for environmental safe recycling.