

BRUCK.



GERMAN  
DESIGN  
AWARD  
NOMINEE  
**2021**

GOOD DESIGN AWARD  
CHICAGO ATHENAEUM

**ALL-IN**

230V SCHIENENSYSTEM, 2-PHASIG  
230V TRACK SYSTEM, 2-CIRCUITS

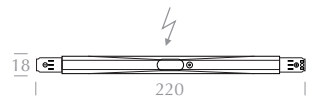
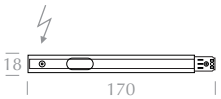
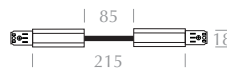
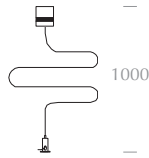
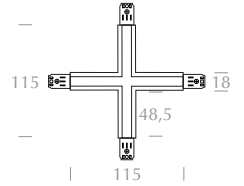
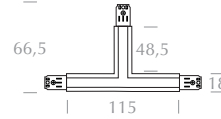
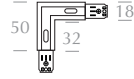






# ALL-IN 230V SCHIENENSYSTEM, PENDELLEUCHTEN

## ALL-IN 230V TRACK SYSTEM, PENDANT LUMINAIRES



**BLOP 30°/60°/100° ALL-IN**



CRI 90	LED 12W	950 <sup>min</sup> lm	2700 K
--------	---------	-----------------------	--------

**BLOP DUR ALL-IN**



CRI 90	LED 12W	950 <sup>min</sup> lm	2700 K
--------	---------	-----------------------	--------

**BLOP MOLL ALL-IN**



CRI 90	LED 12W	950 <sup>min</sup> lm	2700 K
--------	---------	-----------------------	--------

**CANTARA GLAS 190 ALL-IN**



CRI 90	LED 12W	950 <sup>min</sup> lm	2700 K
--------	---------	-----------------------	--------

**CANTARA GLAS 190 G9 ALL-IN**



G9	max 48W
----	---------

**CANTARA GLAS 300 ALL-IN**



CRI 90	LED 12W	950 <sup>min</sup> lm	2700 K
--------	---------	-----------------------	--------

**CANTARA NAT 200 ALL-IN**



CRI 90	LED 12W	950 <sup>min</sup> lm	2700 K
--------	---------	-----------------------	--------

**CANTARA NAT 300 ALL-IN**



CRI 90	LED 12W	950 <sup>min</sup> lm	2700 K
--------	---------	-----------------------	--------

**EUCLID ALL-IN**



CRI 90	LED 12W	950 <sup>min</sup> lm	2700 K
--------	---------	-----------------------	--------

**SILVA NEO 110 ALL-IN**



CRI 90	LED 10W	800 <sup>min</sup> lm	2700 K
--------	---------	-----------------------	--------

**SILVA 110 G9 ALL-IN**



G9	max 48W
----	---------

**SILVA NEO 160 ALL-IN**



CRI 90	LED 10W	800 <sup>min</sup> lm	2700 K
--------	---------	-----------------------	--------

**SILVA 160 G9 ALL-IN**



G9	max 48W
----	---------

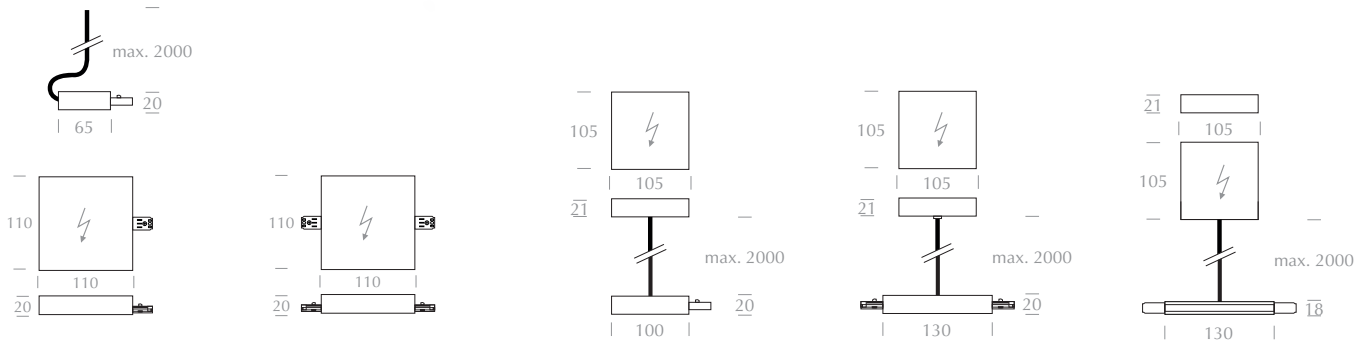
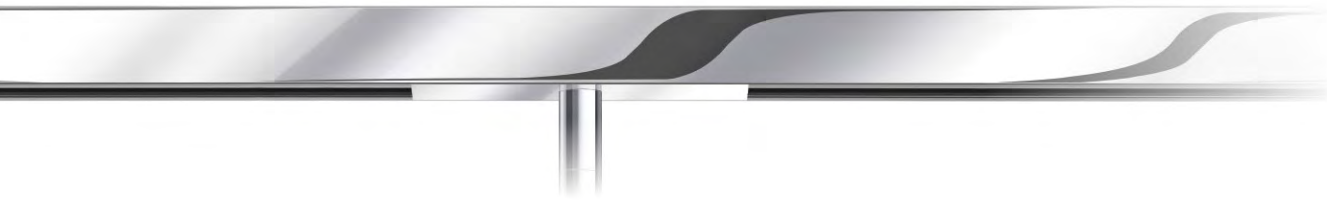
**STAR 55 ALL-IN**



CRI 90	LED 12W	950 <sup>min</sup> lm	2700 K
--------	---------	-----------------------	--------

# ALL-IN 230V SCHIENENSYSTEM, STRAHLER

## ALL-IN 230V TRACK SYSTEM, SPOTS



**BLOP SPOT 30°/60°/100° ALL-IN**



CRI 90	LED 12W	950 <sup>min</sup> lm	2700 K
--------	---------	-----------------------	--------

**BLOP FLAT 120° ALL-IN**



CRI 90	LED 12W	950 <sup>min</sup> lm	2700 K
--------	---------	-----------------------	--------

**EUCLID SPOT 80° ALL-IN**



CRI 90	LED 15W	1200 <sup>min</sup> lm	2700 K
--------	---------	------------------------	--------

**FAIR SPOT GU10 ALL-IN**



GU 10	max 50W
-------	---------

**FINO 30°/50° ALL-IN**



CRI 90	LED 15W	1200 <sup>min</sup> lm	2700 K
--------	---------	------------------------	--------

**SCOBO SPOT II GU10 ALL-IN**



GU 10	max 42W
-------	---------

**SILVA 110 SPOT G9 ALL-IN**



G9	max 48W
----	---------

**STAR SPOT 30-65° AC ALL-IN**



CRI 90	LED 10W	950 <sup>min</sup> lm	2700 K
--------	---------	-----------------------	--------

**STAR SPOT 55 L GU10 ALL-IN**



GU 10	10W
-------	-----

**STAR SPOT 55 GU10 ALL-IN**



GU 10	max 42W
-------	---------

**STAR CLAREO GU10 ALL-IN**



GU 10	max 42W
-------	---------





# ALL-IN 230V SCHIENENSYSTEM ALL-IN 230V TRACK SYSTEM

Design: Dirk Wortmeyer

## ALL-IN

ist die hochwertige Schiene für Netzspannung. Der Name ALL-IN ist wörtlich zu nehmen, denn die ganze Technik, Adapter etc. verschwinden IN der Schiene. Nichts ragt heraus, kein Anschluss, keine Tüllen, keine Schrauben. Trotzdem ist keine Komponente höher als 2cm. Jedes Detail wird umschlossen von wertigem Metall. Der Adapter rastet sauber ein sobald die Hebel umgelegt werden. Dazu gibt es die typischen Vorteile der Netzspannung: Kein Treiber, kein Trafo an der Decke und außerdem zwei getrennt schaltbare Stromkreise. Auch eine Funk-Steuerung per Casambi ist möglich. ALL-IN bildet immer eine schlanke, saubere Linie an der Decke. Nicht mehr und nicht weniger.

## DIMMBARKEIT

Alle ALL-IN-Leuchten sind dimmbar per Phasendimmer.

## ALL-IN

is the high-quality track for mains voltage. The name ALL-IN is to take literally, because all the technology, adapters, etc. disappear inside the track. Nothing protrudes, no connection, no grommets, no screws. Nevertheless, no component is higher than 2cm. Every detail is surrounded by valuable metal. The adapter snaps into place as soon as the levers are turned. In addition, there are the typical advantages of mains voltage: no driver, no transformer on the ceiling and also two separately switchable circuits. Also a radio control by Casambi is possible. ALL-IN always forms a slender, clean line on the ceiling. No more and no less.

## DIMMING

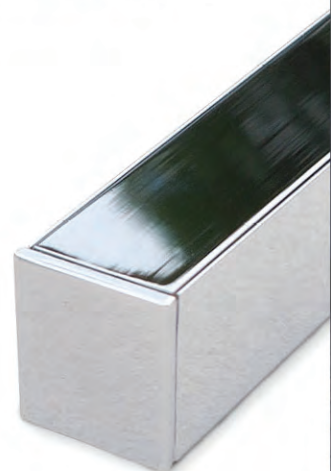
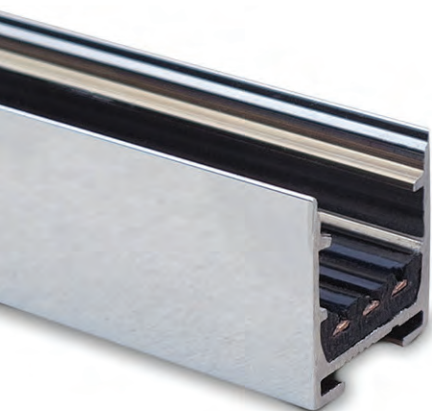
All ALL-IN luminaires are dimmable by phase dimmer.

## CASAMBI

ist die populäre Funk-Steuerung ohne Steuerzentrale. Es funktioniert direkt per Smartphone, Tablet aber auch per Wandschalter und – Dimmer. Für die ALL-IN-Schiene ist CASAMBI besonders hilfreich, weil beide Schaltkreise der Schiene getrennt steuerbar werden – auch dann wenn nur eine Stromleitung zur Decke führt. Möglich wird das durch eine ALL-IN-Einspeisung mit eingebauten CASAMBI-Dimmern.

## CASAMBI

Is the popular remote control without control unit. It works directly via smartphone or tablet but also via wall switch and dimmer. The small CASAMBI device is both a remote receiver and an excellent phase-cut dimmer. For the ALL-IN track CASAMBI is specially helpful because both circuits of the track can be controlled separately even if only one power feed cable leads to the ceiling. An ALL-IN power feed with built-in CASAMBI dimmers makes it possible.







Ihr BRUCK-Lichtberater vor Ort:  
Your local BRUCK lighting advisor:

12/2021 K99999-875

BRUCK GMBH & CO. KG  
INDUSTRIESTRASSE 22A  
44628 HERNE  
TELEFON: +49(0)2323/591-0  
FAX: +49(0)2323/591-100  
[WWW.BRUCK.DE](http://WWW.BRUCK.DE)